



## Pwyllgor y Rhaglen Graffu

Sesiwn Craffu ar Droseddu ac Anrhefn

Perfformiad Partneriaeth Abertawe Mwy Diogel

15 Chwefror 2022

[Partneriaeth Abertawe Mwy Diogel](#)



## Safer Swansea Partnership

Scrutiny Programme Committee

Crime & Disorder Scrutiny Session  
Performance of the Safer Swansea Partnership

15<sup>th</sup> February 2022

[Safer Swansea Partnership](#)



## Sesiwn Craffu ar Droseddu ac Anrhefn Perfformiad Partneriaeth Abertawe Mwy Diogel

- Fel partneriaeth, ewch ati i adolygu ein sefyllfa yn ystod y cyfnod diwethaf.
- Amlinellwch y cynnydd, yr heriau a'r cyfleoedd rydym wedi'u hwynebu yn erbyn y blaenoriaethau rydym wedi'u gosod.
- Ffocws parhaus ar gyfer y dyfodol.



## Crime & Disorder Scrutiny Session Performance of the Safer Swansea Partnership

- As a Partnership review where we have been during the last period.
- Outline the progress, challenges and opportunities that we have faced against the priorities that we have set.
- Continued focus for the future.



## Cefndir

Sefydlwyd Partneriaeth Abertawe Mwy Diogel ym 1998 o ganlyniad i Ddeddf Troseddu ac Anhrefn 1998

Cyd-gadeiryddion: Adam Hill, Dirprwy Brif Weithredwr Cyngor Abertawe a Phrif Uwch-arolygydd Trudi Meyrick, Heddlu De Cymru  
Rhennir y gefnogaeth ysgrifenyddol a chynhelir cyfarfodydd yn fisol

### Gweledigaeth y bartneriaeth

*'Man lle gall holl aelodau cymdeithas deimlo'n ddiogel ar bob adeg'*

### Diben y bartneriaeth

*'Partneriaid Abertawe'n cyflwyno gweledigaeth ar y cyd i greu amgylchedd diogel a chroesawgar i fyw, gweithio, masnachu, astudio, ymlacio ac ymddeol ynddo ac ymweld ag ef.'*

[Partneriaeth Abertawe Mwy Diogel](#)



## Background

The Safer Swansea Partnership was established in 1998 as a result of the Crime and Disorder Act 1998

Co – Chairs: Adam Hill, Deputy Chief Executive Swansea Council and Chief Superintendent Trudi Meyrick, South Wales Police  
Secretariat support shared and meetings held quarterly

### Partnership Vision

*'A place where all members of society can feel safe at all times'*

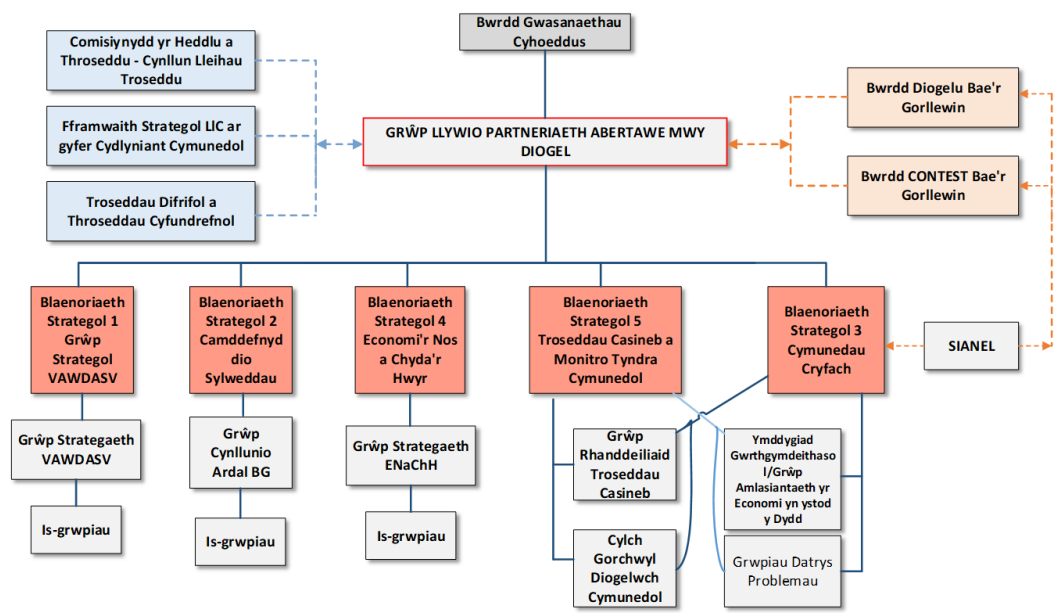
### Partnership Purpose

*'Swansea partners delivering a collective vision to create a safe and welcoming environment in which to live, work, visit, trade, study, relax and retire'*

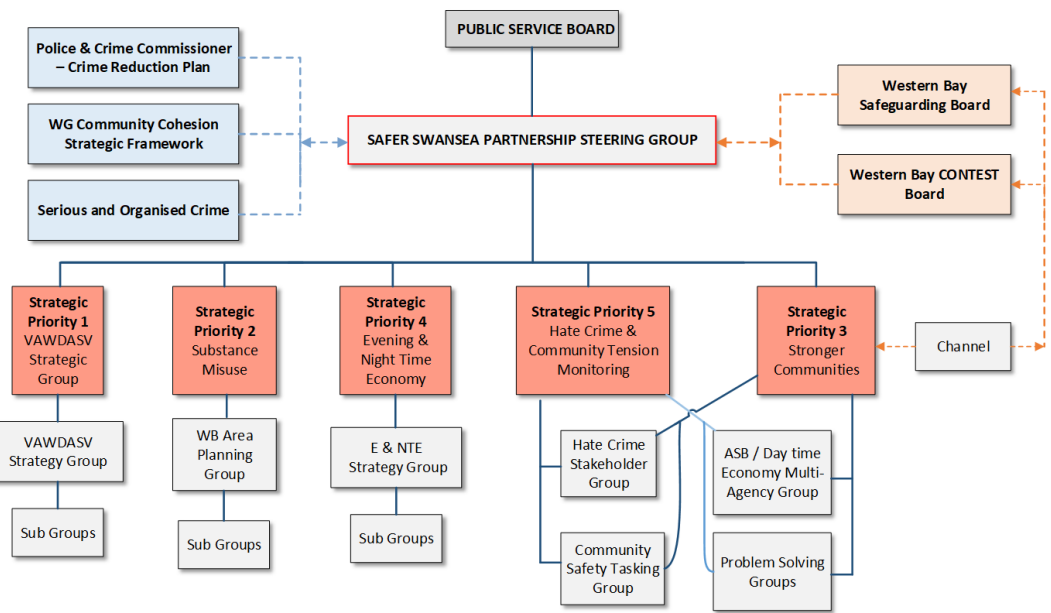
[Safer Swansea Partnership](#)



LLYWODRAETHU PARTNERIAETH ABERTAWE MWY DIOGEL AR HYN O BRYD



CURRENT SAFER SWANSEA PARTNERSHIP GOVERNANCE



## Y Bartneriaeth

| Sefydliad  | Rôl  |
|--|--|
| Cyngor Abertawe                                      | Partner Statudol: Diogelwch Cymunedol, Addysg, Gwasanaethau Ieuenctid, Gwasanaethau Cymdeithasol |
| Heddlu De Cymru                                      | Partner Statudol   |
| Gwasanaeth Tân ac Achub Canolbarth a Gorllewin Cymru | Partner Statudol   |
| Iechyd Cyhoeddus Cymru                               | Cyngor a chefnogaeth broffesiynol  |
| Y Gwasanaeth Prawf Cenedlaethol                      | Partner Statudol   |
| Bwrdd Iechyd Prifysgol Bae Abertawe                  | Partner Statudol   |
| Swyddfa Comisiynwyr yr Heddlu a Throsedd             | Cymorth Prosiect a Strategaeth   |
| Bwrdd Diogelu Bae'r Gorllewin                        | Llywodraethu   |
| Gwasanaeth Ambwlans Cymru                            | Ymateb Iechyd  |
| Cynrychiolaeth Addysg Uwch/Addysg Bellach            | Colegau a Phrifysgolion  |
| Cyngor Gwasanaethau Gwirfoddol Abertawe              | Y Trydydd Sector   |
| Bwrdd Cynllunio Ardal Bae'r Gorllewin                | Camddefnyddio Sylweddau  |
| Uned Atal Trais Difrifol                             | Cyngor a chefnogaeth broffesiynol  |
| Aelodau Etholedig                                    | Cynghorwyr   |

[Partneriaeth Abertawe Mwy Diogel](#)

## The Partnership

| Organisation  | Role  |
|---|---|
| Swansea Council                                     | Statutory Partner: Community Safety, Education, Youth Services, Social Services |
| South Wales Police                                  | Statutory Partner   |
| Mid and West Fire and Rescue Service                | Statutory Partner   |
| Public Health Wales                                 | Professional Advice and support   |
| National Probation Service                          | Statutory Partner   |
| Swansea Bay University Health Board                 | Statutory Partner   |
| Police and Crime Commissioners Office               | Strategy and Project support  |
| Western Bay Safeguarding Board                      | Governance  |
| Welsh Ambulance Service                             | Health response   |
| Higher Education / Further Education representation | Colleges/Universities   |
| Swansea Council for Voluntary Services              | Third Sector  |
| Western Bay Area Planning Board                     | Substance Misuse  |
| Serious Violence Prevention Unit                    | Professional Advice and support   |
| Elected Members                                     | Councillors   |

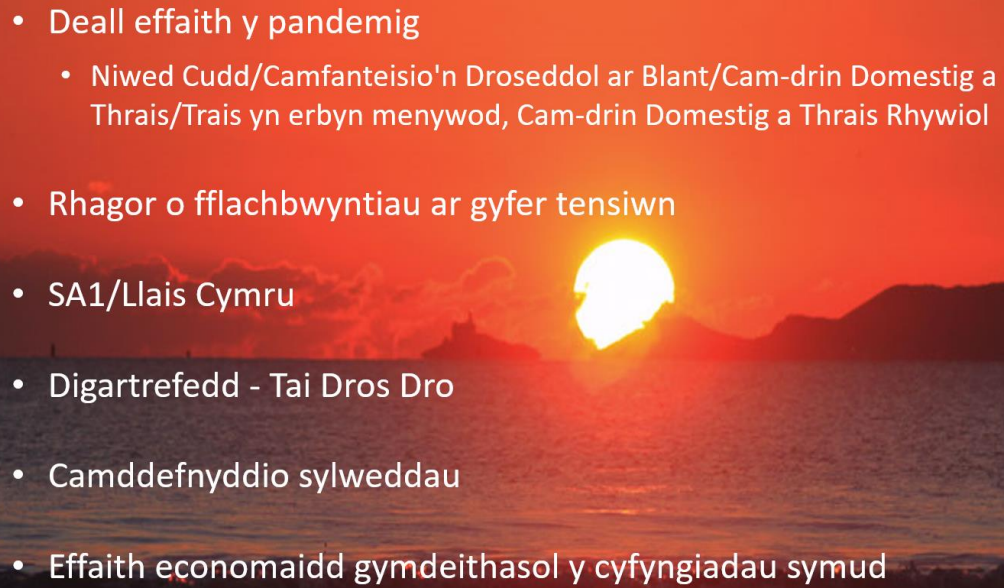
[Safer Swansea Partnership](#)




Fel partneriaeth, ewch ati i adolygu ein sefyllfa yn ystod y cyfnod diwethaf



As a Partnership review where we have been during the last period

- 
- Deall effaith y pandemig
    - Niwed Cudd/Camfanteisio'n Droseddol ar Blant/Cam-drin Domestig a Thrais/Trais yn erbyn menywod, Cam-drin Domestig a Thrais Rhywiol
  - Rhagor o fflachbwyntiau ar gyfer tensiwn
  - SA1/Llais Cymru
  - Digartrefedd - Tai Dros Dro
  - Camddefnyddio sylweddau
  - Effaith economaidd gymdeithasol y cyfyngiadau symud

- 
- Understanding the impact of the Pandemic
    - Hidden harm / CCE / DVA / VAWDASV
  - Increased flashpoints for Tension
  - SA1 / VOW
  - Homeless - Temporary Housing
  - Substance misuse
  - Social economic impact of lockdown



Amlinellwch y cynnydd, yr heriau a'r cyfleoedd rydym wedi'u hwynebu yn erbyn y blaenoriaethau rydym wedi'u gosod



Outline the progress, challenges and opportunities that we have faced against the priorities that we have set



## Cyd-destun sy'n berthnasol i'r pandemig parhaus

- Effaith yr Amrywiolyn *Omicron*.
- Goblygiadau Strategol/Tactegol.
- Goblygiadau o ran Adnoddau a Gwasanaeth.
- Ni fydd y Blaenoriaethau Strategol yn newid ond yn ychwanegol, bydd -
  - Ffocws parhaus ar effaith gudd y pandemig.
  - Ffocws ar densiynau a heriau cymunedol sy'n dod i'r amlwg.
  - Ffocws ar ddiogelwch/les/wydnwch/adferiad y cyhoedd.

## Continuing Pandemic Related Context

- Omicron Variant Impact.
- Strategic / Tactical implications.
- Resource and Service Implications.
- Strategic Priorities Remain Unchanged but additional -
  - Continued focus on the hidden impact of Pandemic.
  - Focus on emerging community tensions and challenges.
  - Focus on public safety / well-being / resilience / recovery.



## Diweddariad ar Drosolwg Blaenoriaethau Strategol

- Trais yn erbyn menywod, Cam-drin Domestig a Thrais Rhywiol (VAWDASV)
- Camddefnyddio Sylweddau
- Cymunedau Cryfach
- Economi'r hwyr a'r nos
- Monitro troseddau casineb a thyndra cymunedol



## Strategic Priorities Overview Update

- Violence against women, domestic abuse and sexual violence (VAWDASV)
- Substance Misuse
- Stronger Communities
- Evening and Night Time Economy
- Hate Crime and Community Tension Monitoring



Heriau

VAWG - Sbeicio

Tensiwn-  
BLM / Reclaim The Streets / VOW  
Cinema&co / Lloches / Anti-vax /  
Clydach

Mayhill – Op Morano

Effaith Digartrefedd mewn  
Llety Dros Dro

Cyd-destun Covid -  
Mae'r 4 Es yn parhau  
Effaith Gudd.  
Difaterwch cyhoeddus

TSS

Ymateb

Strydoedd Mwy Diogel – Man  
cymorth /protocol/Myfyriwr

Deialog Agored/PLO/  
Bod yn Agored a  
Thryloywder / Ffeithiau  
cyn Facebook

Adolygiad Annibynnol  
/ gwersi a ddysgwyd /  
erlyniad cadarn

Monitro, Cefnogi a  
Ymyrraeth partneriaeth

JET / Adnoddau /  
trwyddedu / Lles  
Economaidd a  
Pheronol



Challenges

VAWG - Spiking

Tension -  
BLM / Reclaim The Streets / VOW  
Cinema&co / Asylum / Anti-vax /  
Clydach

Mayhill – Op Morano

Impact of Homeless in  
Temporary Accommodation

Covid Context -  
The 4 Es continue  
Hidden Impact.  
Public apathy.

SSP

Response

Safer Streets – Help point  
/protocol/Student

Open Dialogue/PLO/  
Openness & Transparency /  
Facts before Facebook

Independent Review /  
lessons learnt / robust  
prosecution

Monitoring, Support and  
Partnership intervention.

JET / Resources /  
licensing / Economic  
and Personal  
Wellbeing



Ffocws parhaus ar gyfer y dyfodol



Continued focus for the future



## Busnes Dyddiol yn Parhau

### Rhai manylion penodol

- Datrys Problemau Cymunedol
- Gorfodaeth Cyffuriau – Llinellau Sirol
- Ymddygiad Gwrthgymdeithasol
- Troseddau casineb
- Troseddau sy'n cynnwys cyllyll
- Gwendid



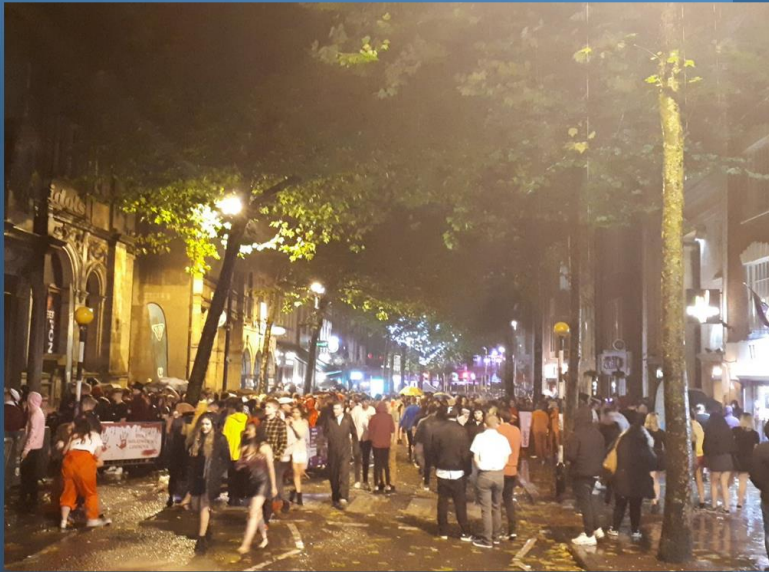
## Daily Business Continues

### Some specifics

- Community Problem Solving
- Drug Enforcement – County Lines
- ASB
- Hate-crime
- Knife-related crime
- Vulnerability

(Appendix Crime levels tracking data)

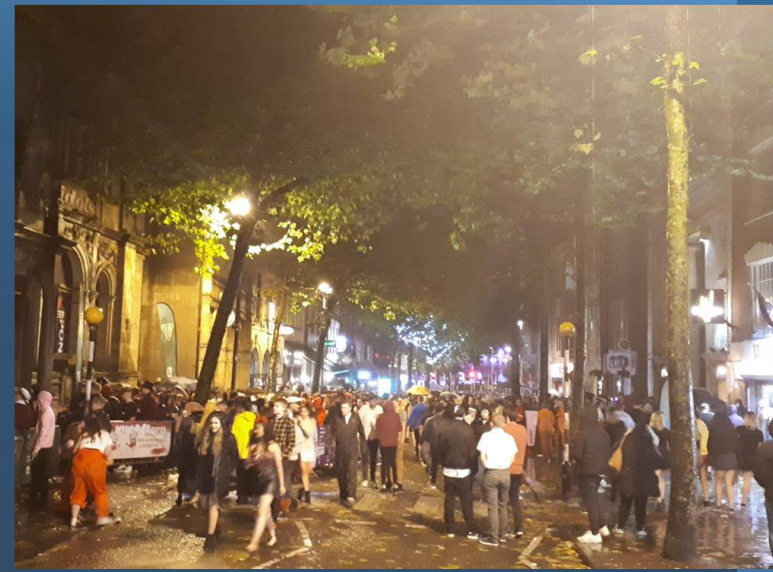
## Cymuned Problem Datrys



Hwylusir gan  
Bartneriaeth  
Grwpiau Datrys  
Problemau

Canolbwyntio ar  
Ganlyniad ac  
Uwchgyfeirio

## Community Problem Solving



Facilitated by  
Partnership  
Problem Solving  
Groups.

Focus on  
Outcome  
and Escalation.

The background of the slide is a blue-tinted photograph of several police officers in riot gear, including helmets and balaclavas, standing in a line. One officer in the foreground is kneeling, with "HEDDLU POLICE" visible on their back. The scene appears to be indoors, possibly a hallway or a room with doors.

## Cyffuriau

- Data masnachu cyffuriau - mis Ionawr i fisRhagfyr 2021.
- Ehangu Llinellau Sirol - Canlyniad Ymgyrch Tilbury
- Naloxone.
- Prosiect *Adder*.

## Drugs

- Drug trafficking data - January to December 2021
- CL Intensification – Op Tilbury result
- Naloxone
- Project Adder

## Ymddygiad Gwrthgymdeithasol



- Ymyriadau fesul cam
- Atgyfeiriad Ymddygiad Gwrthgymdeithasol
- Proses gadarn ac archwiliadwy
- Uwch-gyfeirio i Orchmynion Ymddygiad Troseddol
- Partneriaethau Gwasanaeth Troseddau Ieuencid/Grwpiau Datrys Problemau

## Anti Social Behaviour



- Staged interventions
- ASB referral
- Robust & auditable process
- Escalation to CBOs
- Partnership Yos / PSGs



## Gorchymyn Diogelu Mannau Agored Cyhoeddus

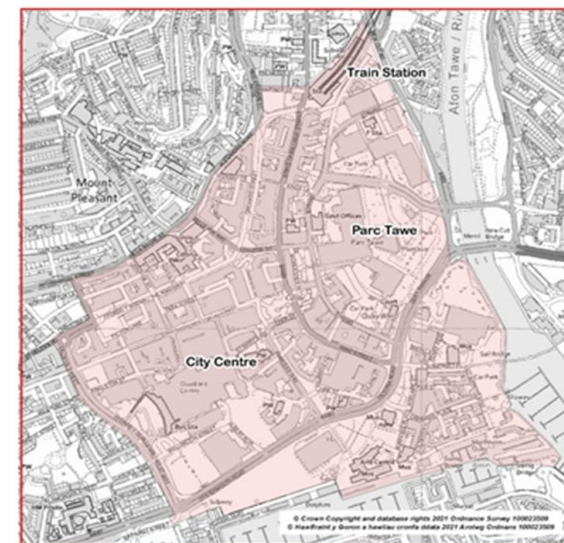
- I ddechrau, mae'r GDMAC peilot yn cynnwys yr ardal o'r orsaf drenau i'r arena gan gynnwys pen uchaf St Helens Road. Unwaith y bydd wedi'i sefydlu, ei werthuso a bod adnoddau ar gael, byddwn yn ei estyn i gynnwys SA1 a GDMAC arall yn Nhreforys.
- Mae'r Cyfnod Ymgysylltu ac Addysg rhwng mis Rhagfyr 2021 a mis Mawrth 2022
- Mae hyn yn cynnwys rhybuddion llafar, gwiriadau diamddiffynedd a chyngor a roddir i unigolion. Mae llythyr yn cael ei anfon at yr unigolyn sy'n cynnwys gwybodaeth am y GDMAC a dolenni i'r wefan i gyfeirio at wasanaethau i gynorthwyo a chefnogi.
- Mae'r broses yn cael ei gorfodi gan Geidwaid Canol y Ddinas sydd wedi derbyn yr holl hyfforddiant perthnasol ar gyfer cyflwyno Hysbysiadau o Gosb Benodol.
- Hyd yma, rydym wedi cynnal 72 o ymrwymiadau gyda 31 o unigolion gwahanol:
  - 62 am gardota
  - 8 am alcohol
  - 1 am gyffuriau



Partneriaeth Abertawe Mwy Diogel

## Public Space Protection Order (PSPO)

- Initially the pilot PSPO covers from the train station to the Arena including the top of St Helens Road. Once established, evaluated and resources are available, we will be extending it to cover SA1 and a further PSPO in Moriston.
- Engagement and Education phase is from December 2021 to March 2022.
- This involves verbal warnings, vulnerability checks and advice given to individuals. A letter is sent to the individual which includes information on the PSPO and links to the website to signpost for services to assist and support.
- This process is enforced by the City Centre Rangers who have received all relevant training to issue FPN's.
- To date we have carried out 72 engagements on 31 separate individuals:
  - 62 for Begging
  - 8 for Alcohol
  - 1 for Drugs
  - 1 for Public Order



Safer Swansea Partnership

## Troseddau Casineb

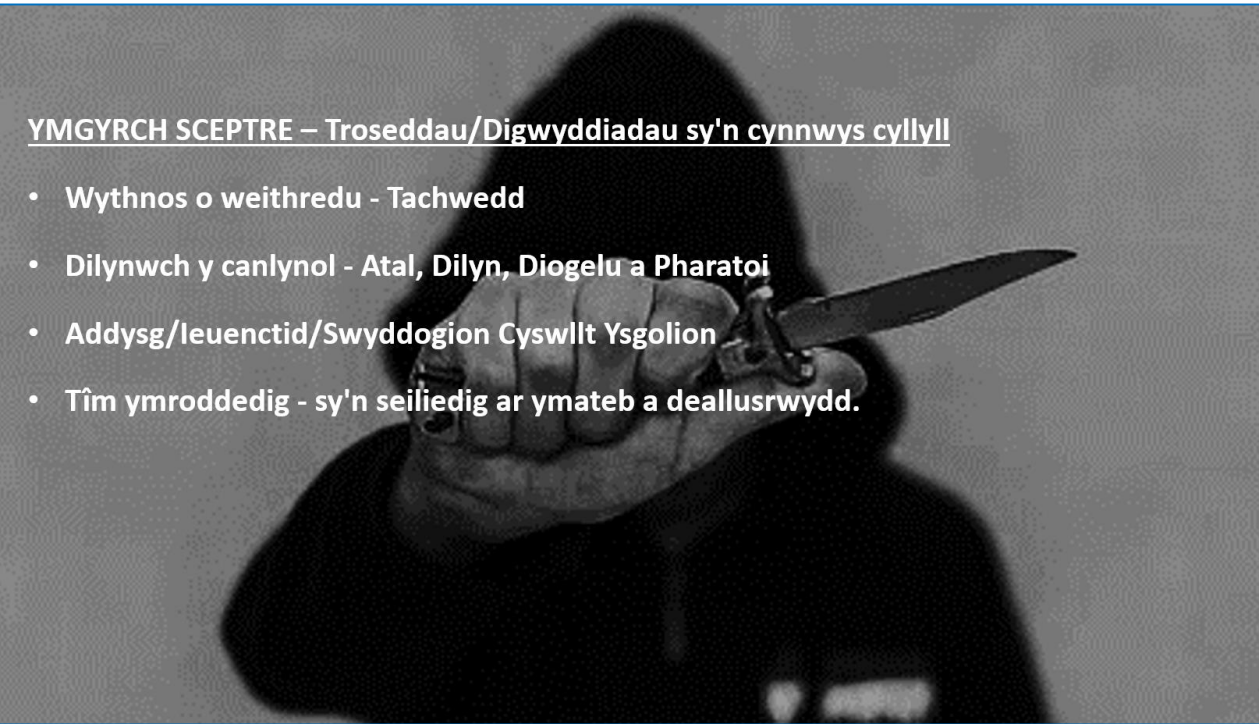
- Cydlyniant
- Ymateb
- Naratif

STOP  
HATE  
CRIME

## Hate Crime

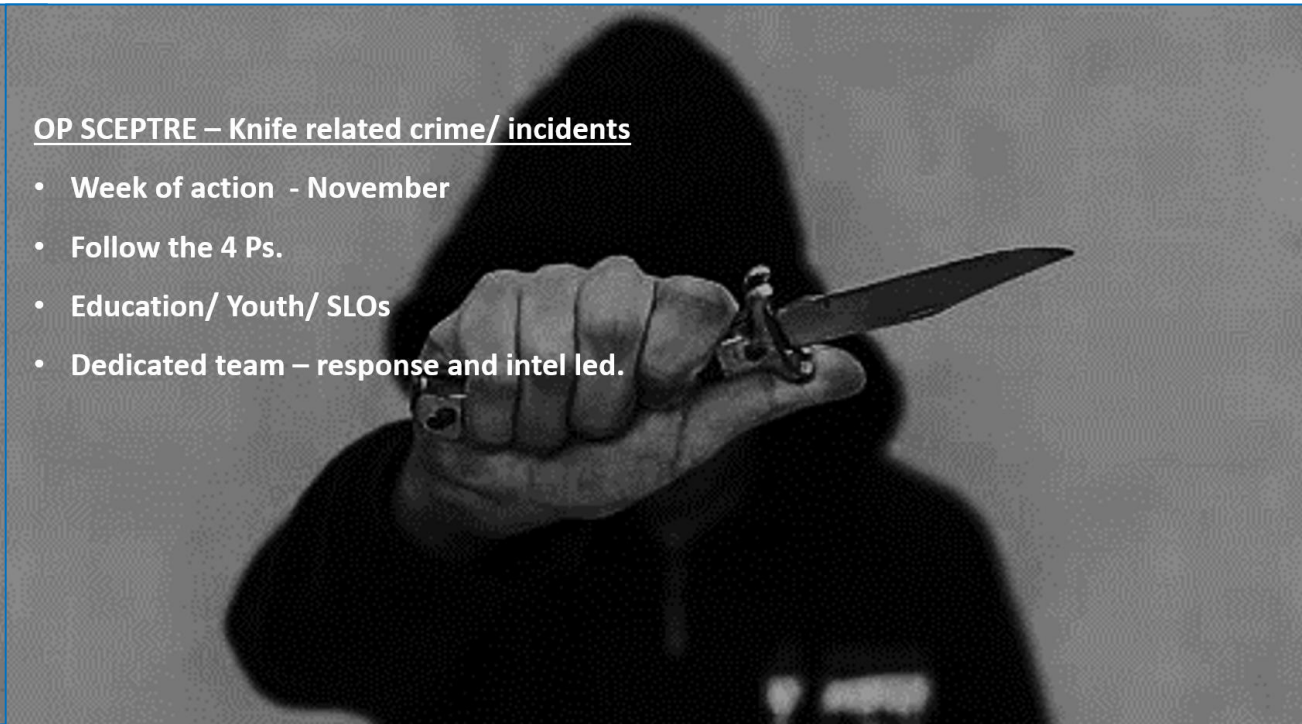
- Cohesion
- Response
- Narrative

STOP  
HATE  
CRIME



YMGYRCH SCEPTRE – Troseddau/Digwyddiadau sy'n cynnwys cyllyll

- Wythnos o weithredu - Tachwedd
- Dilynwch y canlynol - Atal, Dilyn, Diogelu a Pharatoi
- Addysg/Ieuenctid/Swyddogion Cyswllt Ysgolion
- Tîm ymroddedig - sy'n seiliedig ar ymateb a deallusrwydd.



OP SCEPTRE – Knife related crime/ incidents


- Week of action - November
- Follow the 4 Ps.
- Education/ Youth/ SLOs
- Dedicated team – response and intel led.



### Bod yn agored i niwed - datblygiadau

Rhai meysydd allweddol -

- Ymyrryd yn Gynnar ac Atal – rhaglen newid bod yn agored i niwed
- Ailstrwythuro i'r Timau Ymchwilio i Dreisio ac Ymgyrch Soteria
- Gwaith parhaus *SWAN a SWOT*.
- Ffocws parhaus y Grwpiau Ymateb Cyflym i Hunanladdiad
- Defnyddio offer Amllder a Difrifoldeb Atgwmpo (RFG) a chyflwyno rheolwyr troseddwr cam-drin domestig.
- Canolbwyntio ar Gamfanteisio'n Rhywiol ar Blant a Chamfanteisio Troseddol ar Blant.



### Vulnerability - developments

Some key areas-

- Early Intervention and Prevention – vulnerability change program
- Restructure to RIT & Op Soteria
- Continued work of Swan and Swot.
- Continued focus of Suicide Rapid Response Groups
- Use of RFG tools and introduction of DA offender managers.
- Child Sexual Exploitation and Child Criminal Exploitation focus.

## Y Dyfodol

- Ymdrin â'r presennol fel y presennol.
  - Cydlyniant a Chadernid Cymunedol.
    - Her i achub ar y blaen ac addysgu.
  - Diogelu/Tarfu/Gorfodaeth ym mhob maes diamddiffynedd
- 
- Y bartneriaeth i barhau i ddefnyddio ei chryfderau ar y cyd i ateb heriau'r presennol a'r dyfodol.
  - Y bartneriaeth i barhau i weithio igysylltu anghenion a blaenoriaethau cymunedol gyda newid cynaliadwy a gweladwy ac i uwch-gyfeirio lle bo angen

## The Future

- Dealing with the present as the present.
  - Community Cohesion and Resilience.
    - Challenge to pre-empt and educate.
  - Safeguarding / Disruption / Enforcement in all areas of vulnerability.
- 
- Partnership to continue to draw on its joint strengths to meet current and future challenges.
  - Partnership to continue to work to link community needs and priorities with sustainable and visible change and to escalate where necessary.